

The importance of Digital Governance in the Age of AI and Cyberattacks:

Mark S. Steed,
MA (Cantab.), MA (Nottingham), MSc (Ashridge-Hult Business School)
Steed Education

VWV Plus

VWV Practical Strategies Conference

The Royal Society London

Thursday 21st September 2023
1055-1135


@IndependentHead

1

The importance of Digital Governance in the Age of AI and Cyberattacks:

3 questions school leaders need to consider:

1. How can schools get value from their IT and IS spend?
2. How can schools use AI ethically, legally and safely?
3. How should school leaders prepare their school for a cyberattack?



2


1



3

A slide with a blue background. On the left, there is a smaller version of the magnifying glass over binary code image. To the right of this image, the text "How do schools get great Information Technology and Information Systems?" is written in a white, sans-serif font. The background of the slide features a faint, light blue pattern of binary code and geometric shapes.

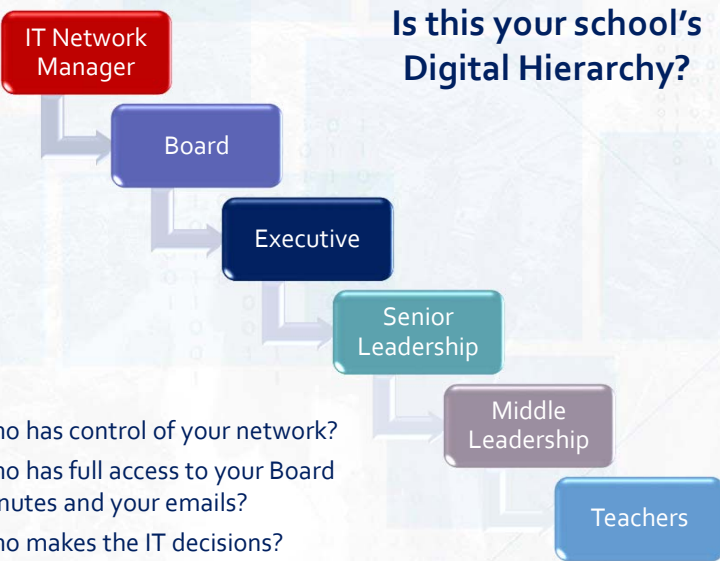
4




Common Mistakes Who holds the keys?

- Who has control of your network?
- Who has full access to your Board minutes and your emails?
- Who makes the IT decisions?


Is this your school's Digital Hierarchy?



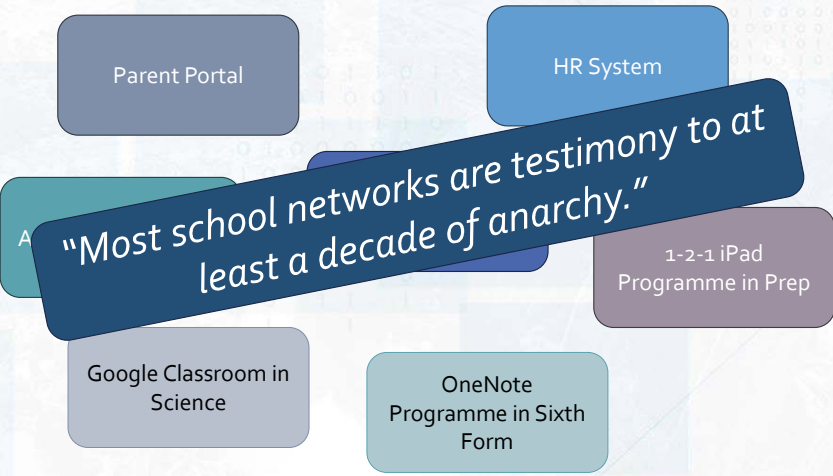
```
graph TD; IT[IT Network Manager] --> Board[Board]; Board --> Executive[Executive]; Executive --> Senior[Senior Leadership]; Senior --> Middle[Middle Leadership]; Middle --> Teachers[Teachers];
```



5



The evolution of a typical school's IT systems



Parent Portal


HR System

Google Classroom in Science

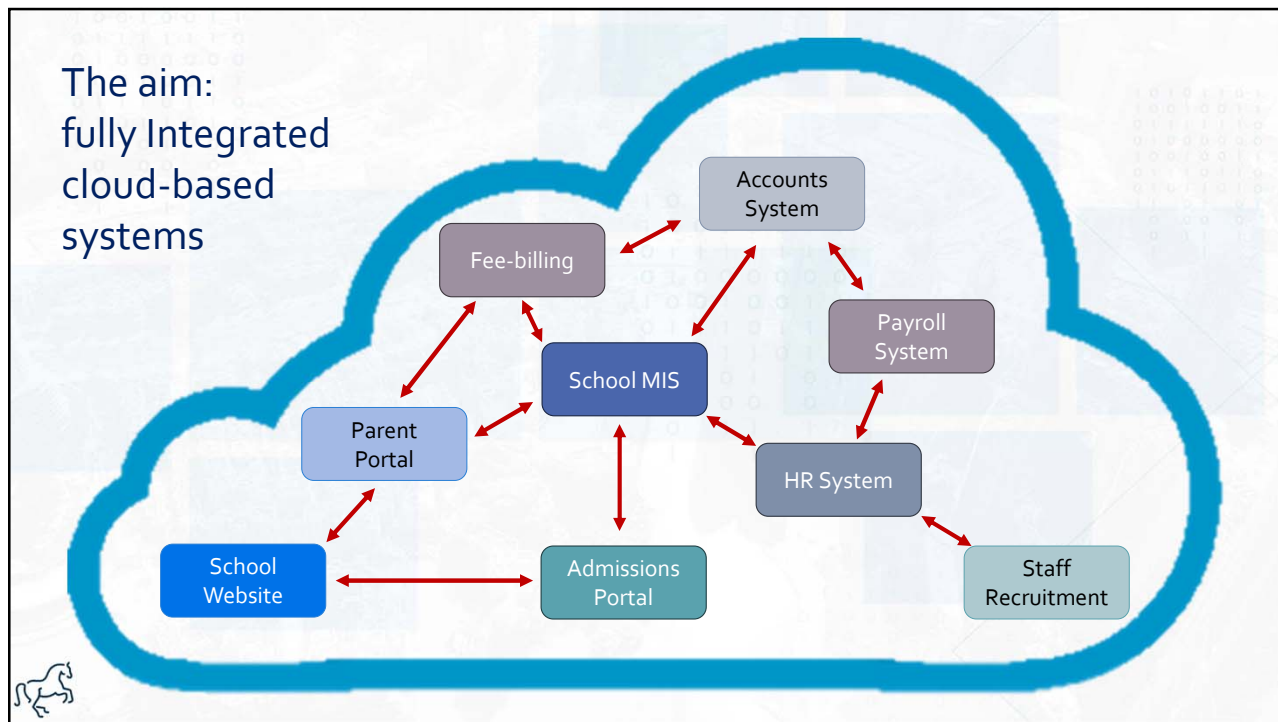
OneNote Programme in Sixth Form

1-2-1 iPad Programme in Prep

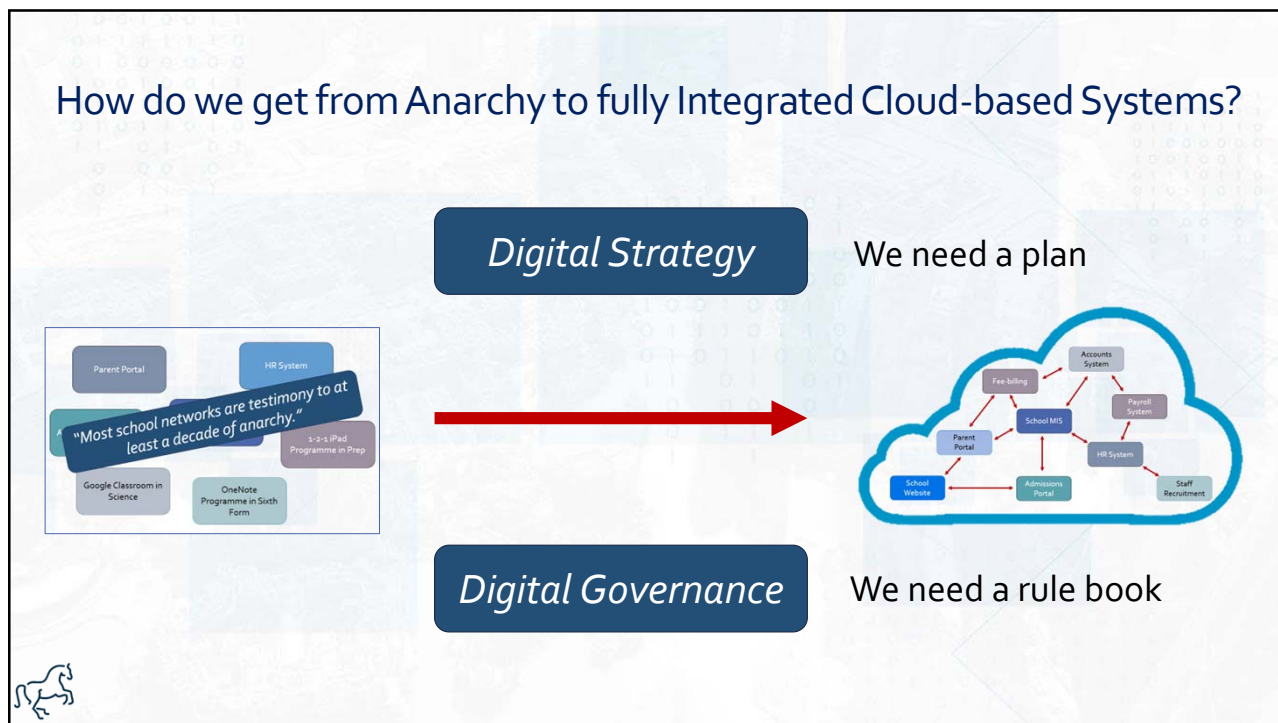
"Most school networks are testimony to at least a decade of anarchy."



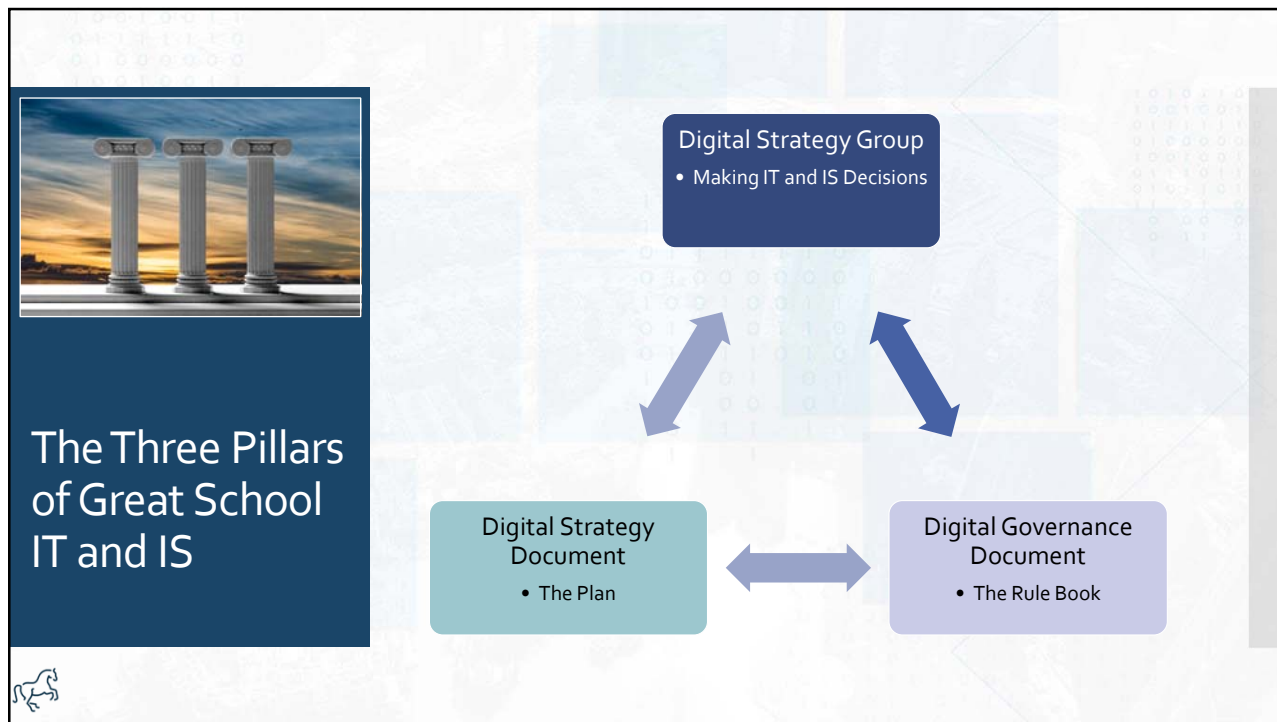
6



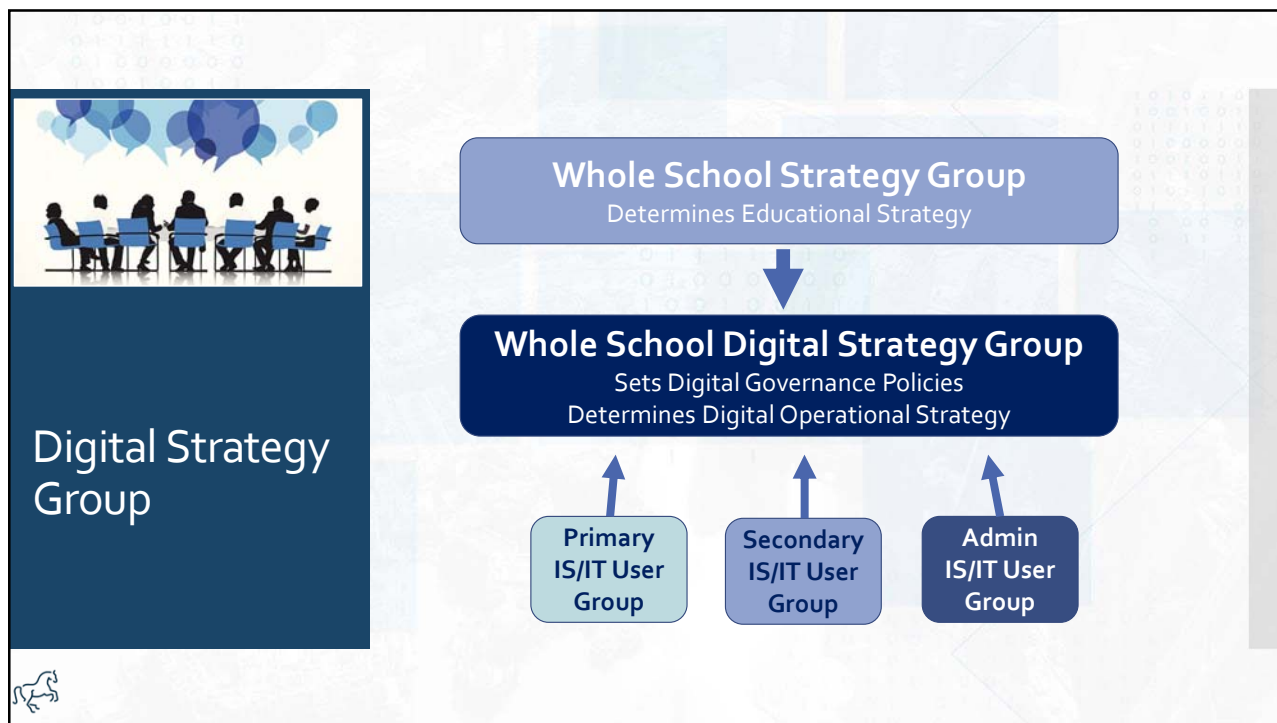
7



8




9




10

5




Digital Strategy Group

Deputy Head Academic Senior [Chair]	Educational
Director of Finance and Operations	SMT/ Admin
Director of Data Systems and Information Technology Chief Information Safety Officer (CISO)	IT Technical
Head of Data Systems (iSAMS and other school systems)	IT Technical
Head of IT Support (Staff and Student Help Desk)	IT Support
MDM & System Manager (iPads and apps in the Prep Schools)	IT Technical
Deputy Head of Prep School	Educational
Assistant Head Data and Exams (Senior)	Educational
Digital Lead – Prep School	Educational
Digital Lead – Senior School	Educational




11

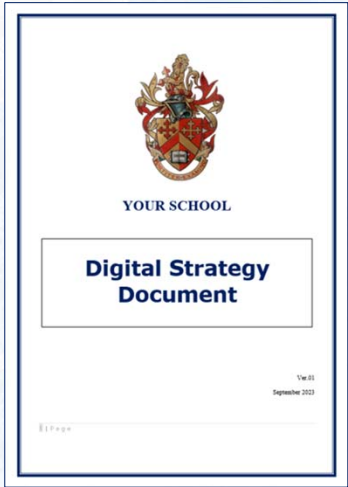
Educational priorities must drive IS/IT priorities.



12



Document the plan and the rules.



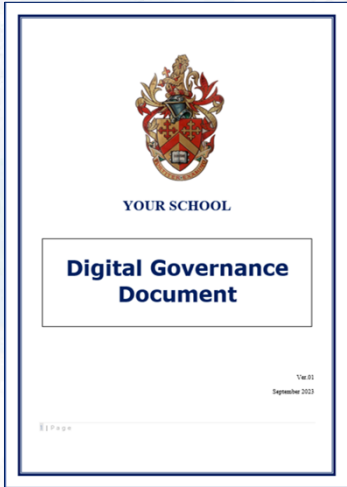
YOUR SCHOOL

Digital Strategy Document

Version 01
September 2013

Page

The Plan




YOUR SCHOOL

Digital Governance Document

Version 01
September 2013

Page

The Rules



13



Digital Strategy



YOUR SCHOOL

Digital Strategy Document

Version 01
September 2013

Page

The Plan

- Digital Tech in the Classroom plan
 - 1-2-1 iPad in Prep roll out
 - OneNote roll out in Senior
- Cloud Migration Programme
- Cyber-risk Mitigation Implementation Plan
- New HR System

- Timeline
 - Minimise disruption
- Costs
- Training needs



14

Digital Governance:
What is allowed?

Write down
the rules

Who determines the IS/IT strategy?
Composition of the Digital Strategy Group

Introduction to the School Core Information Systems

Managing Data and Access Permissions

Compatibility and specification rules for software, hardware and cloud service procurement.

User Behaviour Policies

Hardware and Software specifications for purchasing that year.


The Rules

Digital Governance:
What is allowed?

Write down
the rules


IS and IT decisions are no different to other budget decisions: someone has to decide between competing priorities.

A Digital Governance document should define the process by which IS/IT decisions are made and how competing IS and IT priorities should be managed and implemented.




Digital Governance: Rationale

The Principles:




- Principle:** Educational priorities must inform IS and IT priorities.
- Principle:** IS and IT developments should be aligned to the wider Educational and Operational priorities.
- Principle:** There should be a single sign-on to access these systems, as far as is possible.
- Principle:** IS and IT decisions should take into account cyber threats; and reduce risk to acceptable levels that have been agreed by the Board.

17



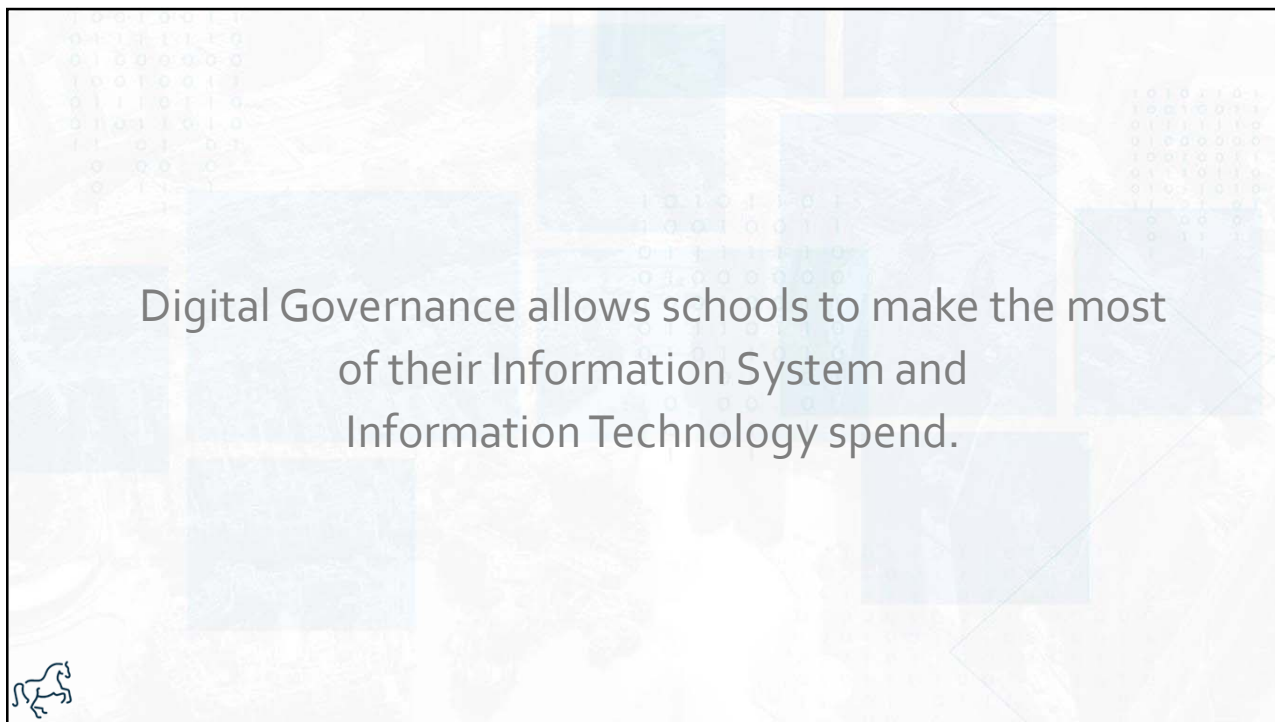
Digital Governance: What is allowed?

Write down the rules



- Rule:** All new systems must be fully compatible with the School MIS (e.g., iSAMS).
- Rule:** All IT and IS expenditure must be approved by the Digital Strategy Group.
- Rule:** Any IT subscriptions should use the generic email subscriptions@ourschool.org.
- Rule:** All Highly Confidential and High Value Confidential Data in Motion (externally) must be encrypted, and, if deemed necessary, password protected.

18



19



20

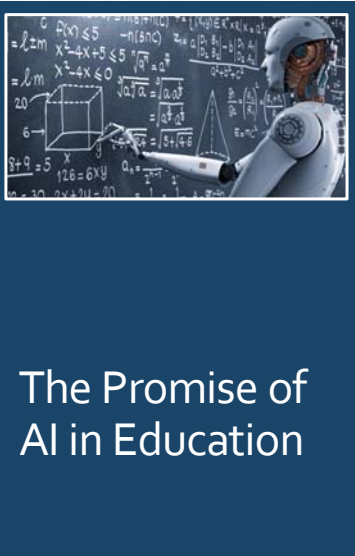
10



Digital Governance in the Age of AI

© STEED EDUCATION 2023



21



The Promise of AI in Education

1. Reduction in Teacher workload
 - Automation of Assessment
 - Automation of Feedback
 - Automation of Record-keeping

2. Generative AI - Large Language Models (Chat GPT-4 etc.)
 - Enhancing how teachers deliver content

22




23

AI enhancing how teachers teach

This video was made in under 10 minutes. The only technical skills needed were knowing how to 'copy and paste', 'click upload and download' and to log in to four websites (ChatGPT, Play.HT, Midjourney and D-ID).


© Dan Fitzpatrick – Author of *The AI Classroom* – used with permission

24





The Promise of AI in Education

1. Reduction in Teacher workload
 - Automation of Assessment
 - Automation of Feedback
 - Automation of Record-keeping
2. Generative AI - Large Language Models (Chat GTP-4 etc.)
 - Enhancing how teachers deliver content
3. Generative AI - Large Language Models (Chat GTP-4 etc.)
 - Doing the heavy lifting
 - Policy drafting
 - Marketing Strategies
 - Report Writing for Parents



Write a list of at least ten items of how large language models can be used in schools

 Assistant

 Poe

Certainly! Here's a list of ten potential uses for large language models in schools:

- 1. Automated Essay Grading:** Language models can be used to provide instant feedback and grading for essays and written assignments, saving teachers significant time and effort.
- 2. Intelligent Tutoring Systems:** Large language models can act as virtual tutors, providing personalized instruction, answering questions, and assisting students in their learning journey.
- 3. Language Translation:** Language models can aid in translating texts and documents between different languages, helping students understand foreign language materials or communicate with students from other countries.
- 4. Plagiarism Detection:** By analyzing the text and comparing it to a vast database, language models can be used to identify instances of plagiarism, ensuring academic integrity.
- 5. Question Answering:** Language models can answer students' questions based on a given text or provide explanations for complex concepts, assisting with comprehension and knowledge acquisition.
- 6. Writing Assistance:** Students can use language models as writing assistants, generating suggestions, providing grammar and style corrections, and helping them improve their writing skills.
- 7. Research and Information Retrieval:** Language models can assist students in finding relevant information for their research projects, summarizing articles, and organizing data.
- 8. Virtual Simulations and Role-Playing:** Language models can simulate real-world scenarios, allowing students to practice their communication and problem-solving skills in a safe and controlled environment.
- 9. Speech Recognition and Transcription:** Language models can transcribe spoken language into written text, aiding students with disabilities or language learners who need assistance in understanding spoken content.
- 10. Adaptive Learning:** By analyzing student performance and behavior, language models can provide personalized learning paths and recommend tailored resources, catering to individual needs and optimizing learning outcomes.

These are just a few examples of the potential applications of large language models in educational settings. As the technology continues to evolve, new and exciting possibilities are likely to emerge.

Write a weather policy for a secondary school in Iceland

Assistant Poe

[School Name]
 Weather Policy
 Effective Date: [Date]


Purpose:
 The purpose of this weather policy is to ensure the safety and well-being of students, staff, and visitors during severe weather conditions in Iceland. This policy provides guidelines and procedures for making informed decisions regarding school closures, delayed openings, and early dismissals due to inclement weather.

1.Weather Monitoring and Communication:
 1.1. The school administration will closely monitor weather conditions through reliable sources such as the Icelandic Meteorological Office, local weather forecasts, and other official channels.
 1.2. Timely communication will be established to disseminate weather-related information to students, staff, and parents. Communication methods may include email, text messages, phone calls, social media, and the school website.

2.School Closure:
 2.1. In the event of extreme weather conditions, such as heavy snowfall, blizzards, severe storms, or unsafe road conditions, the school administration may decide to close the school for the day.
 2.2. The decision to close the school will be made as early as possible, preferably before the start of the school day, to allow sufficient time for students, staff, and parents to adjust their plans.
 2.3. Closure information will be communicated through the established channels mentioned in Section 1.2.

3.Delayed Opening:
 3.1. In cases where weather conditions are expected to improve within a reasonable timeframe, the school may implement a delayed opening.
 3.2. The decision for a delayed opening will be made based on the best available weather information and road conditions. The delay will allow time for conditions to improve and ensure safer travel for students and staff.
 3.3. The duration of the delay will be communicated through the established channels mentioned in Section 1.2. Students and staff should plan to arrive at the school premises in time for the delayed start.

4.Early Dismissal:



27

Comparing what you know about Eton, Harrow and Radley, list 6 reasons why a parent should send their son to Radley.

When comparing Eton, Harrow, and Radley, here are six reasons why a parent might consider sending their son to Radley:

- 1.Strong Academic Reputation:** Radley has a strong academic reputation, providing a rigorous and comprehensive curriculum. It offers a wide range of subjects, enabling students to explore diverse academic interests and excel in their chosen fields.
- 2.Supportive and Nurturing Environment:** Radley is known for its supportive and nurturing environment. The school prioritizes individualized attention and fosters a close-knit community where students feel valued, supported, and encouraged to reach their full potential.
- 3.Well-Rounded Education:** Radley places importance on holistic education, emphasizing not only academics but also extracurricular activities, sports, arts, and character development. Students have ample opportunities to engage in a well-rounded education that promotes personal growth and a balanced lifestyle.
- 4.Outstanding Music and Arts Programs:** Radley has a renowned music and arts program. It offers exceptional facilities, talented faculty, and a wide range of artistic opportunities, such as music ensembles, drama productions, and art exhibitions. This allows students to explore and develop their creative talents.
- 5.Rich Sporting Traditions:** Radley has a strong sporting tradition and offers an extensive range of sports and athletic activities. From team sports to individual pursuits, Radley provides opportunities for students to participate and excel in various sports, promoting physical fitness, teamwork, and sportsmanship.
- 6.Well-Established Pastoral Care:** Radley emphasizes pastoral care, ensuring the well-being and personal development of each student. The school provides a supportive network of tutors, housemasters, and staff who are dedicated to the welfare and happiness of the students, fostering a positive and inclusive community.

These reasons highlight Radley's commitment to academic excellence, holistic development, and a nurturing environment, making it an appealing choice for parents seeking a well-rounded education for their sons.

Explain how Radley has better academic credentials than Eton

I apologize for any confusion in my previous response. It is important to note that both Radley and Eton College have strong academic credentials, and the perception of which one is "better" academically can vary depending on various factors and individual preferences. Each school has its own unique approach to education and a track record of academic success.

Eton College, located in England, is widely recognized as one of the most prestigious and academically rigorous independent schools in the United Kingdom. It has a long-standing history of providing a high-quality education and has produced many notable alumni who have excelled in various fields.

Similarly, Radley, also located in England, has a strong academic reputation and has achieved excellent academic results over the years. The school offers a comprehensive curriculum, providing students with a wide range of subjects and opportunities for intellectual growth and development.

When comparing the academic credentials of Radley and Eton College, it is important to consider factors such as the individual student's needs, preferences, and goals, as well as the specific academic programs and resources offered at each school. Parents should thoroughly research and visit both schools to assess how well they align with their child's academic aspirations and educational requirements.

It is worth noting that the academic success of a school is not solely determined by its reputation or rankings but also by the individual efforts of the students, the quality of teaching, and the overall educational environment. Therefore, it is advisable for parents to consider multiple factors beyond just academic credentials when making a decision about their child's education.

28

Write an end of year report of 200 words (not in a letter format)
Jane Doe, Year 6 Form Blue
working well in class but not doing her homework.
Well behaved
VR of 105 and NVR of 95 and struggles with maths.
Include recommendations

29

End of Year Report - Jane Doe (Year 6 Form Blue)

Jane Doe has consistently shown exemplary behavior and active participation in class throughout the academic year. Her positive attitude and engagement contribute positively to the classroom environment. Jane has demonstrated a strong understanding of the curriculum, as evident by her VR score of 105 and NVR score of 95, which highlight her excellent reasoning abilities and non-verbal reasoning skills.

However, we have observed a consistent challenge with Jane's completion of homework assignments. While she performs well in class, it is crucial to reinforce learning through consistent homework practice. We recommend establishing a structured homework routine at home, allocating specific time and a quiet study area. Encouraging Jane to take ownership of her homework responsibilities, setting achievable goals, and providing support when needed will be beneficial for her academic progress.

Additionally, Jane has encountered difficulties in mathematics throughout the year. To address this, we recommend providing her with additional support and resources. Extra practice sessions, accessing online resources, and seeking assistance from the mathematics department can help strengthen her mathematical skills and boost her confidence.


We appreciate the cooperation of Jane's parents in addressing these challenges. Regular communication between home and school will greatly assist in monitoring her progress and identifying areas that require further attention. By working together, we are confident that Jane can overcome her struggles and continue to excel academically.

Jane's positive behavior, dedication in class, and the support of her parents provide a solid foundation for her future success. With continued effort and targeted interventions, we are optimistic that Jane will further develop her academic skills and reach her full potential.




30

15



Digital Governance and AI




Digital Governance issues relate to where personal data is held and how it is used.

Most use of Chat GTP entails moving personal data outside the school’s control.


Digital Governance Rule:

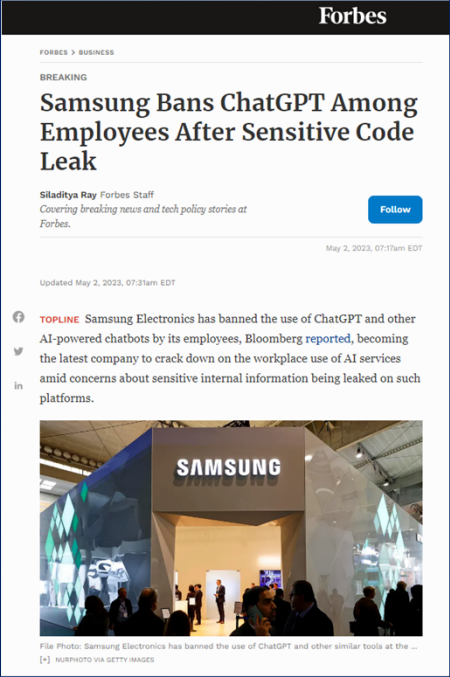
Rule: No confidential data may be shared on any external generative AI Large Language Model, such as Chat-GPT.

(It is possible to host generative AI Large Language Model bots on a school’s private cloud, which gets around this issue.)



Digital Governance and AI





Digital Governance and AI

The Cottesmore Free AI Conference 2023: Open-Source AI Acceptable Use Agreement Policy for Schools

The Cottesmore Free AI Conference 2023:
Open Source AI Acceptable Use Agreement Policy for Schools
Created in generous collaboration with Darren Coxon, COO Britus Education

Please note that these sections may need to be adjusted based on the specific AI and data technologies used in your school and the relevant laws and regulations. It's also important to consult with legal counsel when developing policies like this to ensure they comply with all relevant laws and regulations.

AI Acceptable Use Agreement for Schools

Section 1: Introduction

1.1 Purpose of the Agreement

The purpose of this Acceptable Use Agreement for Artificial Intelligence (AI) in Schools is to ensure the ethical, safe, and effective use of AI and data technologies in our educational environment. This Agreement aims to provide clear guidelines for all users—students, teachers, leaders, governors and administrators—on the appropriate use of AI and data technologies in our school.

1.2 Scope of the Agreement

This Agreement applies to all AI and data technologies used in our school, whether they are used for teaching, learning, administration, or other school-related activities. This includes, but is not limited to, AI systems used for marking work, personalized learning platforms, data analysis tools, and any other AI or data technologies implemented in our school.

33

Strong Digital Governance ensures that Artificial Intelligence is used in a legal and ethical way.

34

17



35

 A slide titled "Digital Governance in the Age of Cyberattacks". The slide features a background of light blue and white geometric patterns. On the left side, there are two inset images: the top one is a magnifying glass over green binary code, and the bottom one is a graphic with the text "CYBER ATTACK" and various icons representing digital security and technology.

Digital Governance in the Age of Cyberattacks

© STEED EDUCATION 2023

36



Digital Governance in the age of Cyberattacks



Message from the attackers

```

#####
##### YOUR FILES WERE ENCRYPTED #####
##### AND MARKED BY EXTENSION .du_...ee@keemail.me #####
#####
--
DONT WORRY! YOUR FILES ARE SAFE! ONLY MODIFIED!
WE STRONGLY RECOMMEND you NOT to use any Decryption Tools.
These tools can damage your data, making recover IMPOSSIBLE.
Also we recommend you not to contact data recovery companies.
They will just contact us, buy the key and sell it to you at a higher price.
If you want to decrypt your files, you have to get RSA private key.
--
To get RSA private key you have to contact us via email to:
----->> du_...ee@keemail.me <<
and send us your id: >> 376 '500 <<
If you have not been contacted 12 hours after your email
please write to us at this email address: >> fa_...ip@protonmail.ch <<
--
HOW to understand that we are NOT scammers?
You can ask SUPPORT for the TEST-decryption for ONE file!
--
#####
    
```



What a Cyberattack looks like




Server	Role	File Encrypted	App Running Property
1	Domain Controller	Y (Netlogon folder only)	Y
2	Domain Controller	Y (Netlogon folder only)	Y
3	File Server	N	Y
4	Application Server	Y	Sibelius, Y


"A detailed volume analysis from key server shows no sign of data exfiltration."

10	Primary Print Server (Paper Cut) + Web Print Server & Mobility print	Y (Partially)	Y
11	Secondary Print Server + Web Print Sandbox Server	Y (Partially)	Y
12	SQL Server	Y (Partially)	TBC
13	IT Robot system	Y	N
14	Backup Server	Y	N
15	Backup Server	Y	N
16	File Server	Y	Y
17	Domain Controller	Y (Netlogon folder only)	Y
18	Domain Controller	Y (Netlogon folder only)	Y
19	File Server	Y	Y
20	File Server	Y	Y
21	File Server	Y	Y


"It looks like financial data has been encrypted. There is a tape back-up which looks like we will need as the cloud back-up also locked."




What a Cyberattack looks like



On Premises	On the Cloud
<ul style="list-style-type: none"> Active Directory Database of network permissions and access. Domain Controller manages network and identity security requests. QuickBooks (Finance Package) Accounts Receivable Accounts Payable Annual Accounts HR Pro (HR Records) Local Server Storage Staff Drives HR Drives Recruitment Drive Finance Drive 	<ul style="list-style-type: none"> Google Classroom Teaching and learning Finalsite (School Website) ISAMS (School MIS) Open Apply (Admissions portal) SharePoint Site School Policies Staff Handbook



What a Cyberattack looks like



On Premises	On the Cloud
<ul style="list-style-type: none"> Active Directory Database of network permissions and access. Domain Controller manages network and identity security requests. QuickBooks (Finance Package) Accounts Receivable Accounts Payable Annual Accounts HR Pro (HR Records) Local Server Storage Staff Drives HR Drives Recruitment Drive Finance Drive 	<ul style="list-style-type: none"> Google Classroom Teaching and learning Finalsite (School Website) ISAMS (School MIS) Migrated from SIMS July 2020 Open Apply (Admissions portal) New System May 2020 SharePoint Site School Policies Staff Handbook New System April 2020

It was pretty bad, but it could have been much worse.



What a Cyberattack looks like

Message from the attackers

YOUR FILES WERE ENCRYPTED #####
AND MARKED BY EXTENSION .du...ee@keemail.me

--
DON'T WORRY! YOUR FILES ARE SAFE! ONLY MODIFIED!
WE STRONGLY RECOMMEND you NOT to use any P...
These tools can damage...

Who decides whether or not to pay the ransom?

...@keemail.me <<
... send us your id: >> 376 '500 <<
If you have not been contacted 12 hours after your email
please write to us at this email address: >> fa...ip@protonmail.ch <<
--
HOW to understand that we are NOT scammers?
You can ask SUPPORT for the TEST-decryption for ONE file!
--
#####



Lessons learned from the Cyberattack

Cybersecurity is a leadership issue.





Cybersecurity is a leadership issue



“By making cybersecurity a technical issue, leaders exacerbate the challenge of an already complex problem and increase their organization’s risk of being attacked.”



Eric Rosenbach

Former ‘Cyber Czar’; Pentagon Chief of Staff and Assistant Secretary for Defense for the US Department of Defense



Lessons learned from the Cyberattack



Cybersecurity Network Infrastructure and Systems

Investing in Systems

- Firewall
- Anti-virus software
- Patch Management
- Host-based Intrusion Detection Systems (HIDS)
- Network-based Intrusion Detection Systems (NIDS)
- Dynamic Behaviour Analysis
- Encryption

Cybersecurity People and Processes

Investing time and effort in better processes

- Training of staff
- Password Policies
 - How often to change
 - Length (and complexity)
- Network Access Control
- 2-factor Authentication
- Allocation of permissions
- Data Breach Response Plans
- Reporting Protocols



Lessons learned from the Cyberattack



Some Mistakes:

- Staff weren't trained in cyber-awareness.
 - An employee clicked on a phishing email letting malware onto the system.
- Staff had admin rights to their school devices.
- Staff devices had not be shutdown;
 - Some machines were running on very out of date anti-virus software.
- We hadn't ever forced changes in passwords.
- There were no protocols for off-boarding leavers and deleting old admin accounts.
 - There was a disused network admin account that had been created 9 years previously.
- We had backed up too much rubbish – needle in haystack.

45



Lessons learned from the Cyberattack



Cyber breaches are inevitable:

“Fail to prepare, prepare to fail.”

46

23

CYBER ATTACK

YOUR SCHOOL

Cyber Risk Mitigation Strategy

1	INTRODUCTION.....	2
2	VISION.....	4
3	STRATEGIC GOALS AND OBJECTIVES.....	4
4	METRICS.....	7
5	MOST LIKELY THREAT ACTORS AND METHODS OF ATTACK.....	8
6	BUSINESS CRITICAL ASSETS.....	11
7	VULNERABILITIES.....	14
8	CYBERSECURITY GOVERNANCE.....	16
9	CYBERSECURITY AWARENESS AT THE SCHOOL.....	23
10	CHALLENGES PROTECTING THE NETWORK.....	27
11	LEGAL CONSIDERATIONS.....	31
12	INCIDENT RESPONSE PLAN.....	34

YOUR SCHOOL

Crisis Management Plan

Data Breach Incident Response Plan

INTRODUCTION.....	3
1 STEP 1: PREVENTION.....	4
2 STEP 2: PLANNING.....	7
3 STEP 3: PREPARATION.....	11
4 STEP 4: DETECTION.....	12
5 STEP 5: ANALYSIS.....	14
6 STEP 6: CONTAINMENT.....	16
7 STEP 7: EVALUATION AND COMMUNICATION.....	17
8 STEP 8: ERADICATION.....	21
9 STEP 9: RECOVERY.....	22
10 STEP 10: POST-EVENT ANALYSIS.....	23
11 APPENDIX ONE CYBER INCIDENT ANALYSIS FORM.....	24

1 | Page

Responding to a Cyberattack

Strong Digital Governance is at the heart of effective school cybersecurity.

The diagram illustrates a strategic shift in school governance. On the left, two documents are shown: 'YOUR SCHOOL Cyber Risk Mitigation Strategy' and 'YOUR SCHOOL Crisis Management Plan Data Breach Incident Response Plan'. A large white arrow points to the right, where two new documents are shown: 'YOUR SCHOOL Digital Strategy Document' and 'YOUR SCHOOL Digital Governance Document'. This represents the integration of digital considerations into the school's core strategic and operational frameworks.

- Migration of systems and data held in on-premises servers to the Cloud.
- Safe destruction of obsolete servers and data
- Registration of MAC addresses
- Separate Student and Guest WIFI access

- Password Policies
- Admins to use Password Managers
- 2 Factor authentication to access ISAMS remotely
- Use of USB storage devices and extension Hard Drives
- Onboarding and offboarding of staff and student protocols

Digital Governance: What is allowed? Write down the rules


Portable Storage Devices

Rule: The School prohibits the use of USB storage devices and of Extension Hard Drives.

Exceptions:
 School-owned Camera SD cards
 School-owned encrypted USB Storage Devices for Exam Scripts to be printed.


Rationale:
 These pose a significant risk to the School Network integrity (they are a very easy way to introduce Malware to our systems, circumventing the Firewall defences).
 They also are an easy way for employees to exfiltrate valuable data from the School data systems.

The School has network software which registers MAC address and only allows pre-registered devices to connect to the network.



**Digital Governance:
What is allowed?**

**Write down
the rules**



Offboarding - Staff

Rule: All staff leavers' access to school systems is disabled immediately on leaving the organisation (often the last working day of Term 3).

- Salamander will deactivate the Active Directory account automatically once a staff member's status is set as "Archived/Former" in iSAMS HR Manager module by a HR staff member;
- They are removed from all group memberships;
- Permissions and licenses within M365 are removed.
- Leavers' accounts are suspended, and mailbox will move to being a 'shared mailbox' for archive purposes.
- Leaving Teaching Staff may retain access to their school email accounts (e.g., to analyse examination data) until their final day of employment – usually 31st August (but will not have any access to other school systems).

51



52


26



Digital Governance in Summary

© STEED EDUCATION 2023

53



Digital Governance: What is allowed?

Write down the rules

Digital Governance allows schools to make the most of their Information System and Information Technology spend.

Strong Digital Governance ensures that Artificial Intelligence is used in a legal and ethical way.

Strong Digital Governance is at the heart of ensuring effective school cybersecurity.

© STEED EDUCATION 2023

54

27



Digital Strategy for Schools
Services include

- Information Technology Audit - of the network infrastructure
- Information Systems Audit - of the digital systems, databases and information management;
- New School IT Infrastructure Planning
- Mobile Device Strategy and Implementation
- Acceptable Use Policy Drafting
- Digital Governance Documentation Drafting
- Social Media and Digital Marketing Strategy

<https://www.steededucation.com/digital-strategy>

Cybersecurity for Schools
Services include

- Cyber Risk Audit of a School's Data policies, procedures and practices
- Developing and documenting a Cyber-Risk Mitigation Strategy
- Formulating a Cyber-Incident Response Plan
- Drawing up a Cyber-Risk Register
- Developing a Cyber-Incident Communications and Reporting Plan
- Cloud-Migration Strategy and Planning

<https://www.steededucation.com/cyber>

55



Mark S. Steed MA (Cambridge), MA (Nottingham), MSc (Ashridge-Hult Business School)
Principal and CEO of Kellett School, Hong Kong

Email: mark@steededucation.com

LinkedIn: uk.linkedin.com/in/independenthead

X: [@independenthead](https://twitter.com/independenthead)



56

28

