

Bristol Practice Strategy

Healthcare Conference - 18 October 2022

Speaker Profiles



Ben Willis
Healthcare partner - VWV

Ben is a commercial property lawyer with over 25 years' experience of working with both mainstream commercial clients and those operating in the healthcare sector. He is Head of the Healthcare team and has particular expertise in the ownership, development and funding of GP surgeries. Ben has been involved in over 100 such developments.

With Primary Care Networks (PCNs) being high on the agenda for many GP practices, Ben is leading on this project supported by Oliver Pool to

help you to consider your options, from supporting you with the initial set-up and structure through to models, drafting up your agreements and premises' issues.

Ben takes time to understand the healthcare sector and to establish a strong rapport with clients. This brings a wider perspective to the commercial issues faced by clients and consistently proves to be important in giving the best advice to suit the circumstances. He leads a team of specialist lawyers and established links

with Banks, Accountants and other professionals to complete a strong collaborative approach.

Clients rate him to be 'consistently helpful and extremely knowledgeable and always responds quickly' and recognise the healthcare team for its 'professional, fair and straightforward approach'.



Bryony Finch
Director of Corporate & Transformation -
Symphony Healthcare Services Ltd

After obtaining a LLB Law degree in 2013, Bryony began working in Human Resources for a large retail chain prior to joining the NHS in 2015. After initially supporting the establishment and work of the Symphony Vanguard Programme to develop new models of care across

the NHS, Bryony continued working under the Symphony umbrella by supporting the subsequent creation and management of Symphony Healthcare Services Ltd. Bryony currently leads the transformation programme within the organisation, supports the integration of new

surgeries and undertakes the role of Company Secretary.

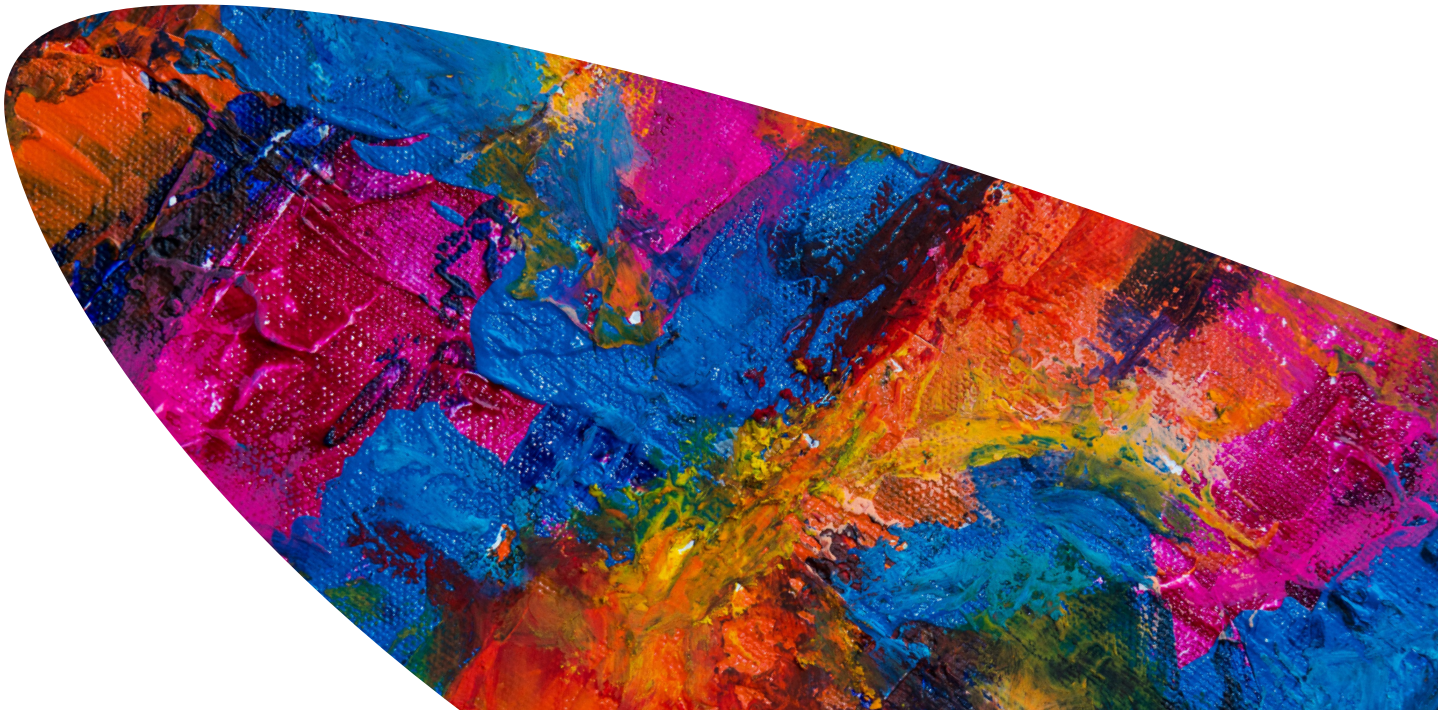


Dr Michael Smith
GP and Primary Care Advisor - Mid & South

Dr Mike Smith is a portfolio GP based in North London. He is currently a GP Partner in Knebworth, Hertfordshire. He has worked in most aspects of the health service for the last 24 years, and currently has no plans to slow down. Working within system transformation in London, Manchester, United States, New Zealand and many more places,

he has an understanding about what works in healthcare and also (more importantly) what doesn't work. Currently the Specialist Advisor for Primary Care for the Mid & South Essex Integrated Care System, he is currently working on the clinical strategy across 27 Primary Care Networks and Neighbourhoods as well as being the

Senior Responsible Clinical Officer for Primary Care Estates, he really does have his hands full. Bold and challenging as a public speaker but with a reputation as an NHS maverick, you will certainly be entertained. He also runs a small education company that trains around 1000 clinicians a year worldwide.





Elizabeth Dunn
Improvement Consultant - Xytal

Elizabeth has been leading and facilitating personal and organisational change for over 20 years. She has worked in and around NHS primary and secondary care for over 10 years.

She is skilled and experienced in leading transformation, change and leadership programmes using a blend of approaches, including Lean Six Sigma and Design thinking and has a

particular interest in strength-based approaches such as appreciative inquiry, positive psychology, and solution-focused approaches.



Jane Jordan
Director - Lentells

Jane has been helping medical clients since 1994 and her portfolio includes GP practices, locums and hospital consultants. She qualified as a certified accountant in 1998 joining Lentells as a Director in 2010 and is former

Vice-Chair of the ICAEW Healthcare Committee. Jane enjoys meeting with clients and explaining their finances in a clear and jargon-free manner.

When not working, Jane enjoys road cycling and walking her dogs.



Jon Szabo
Regional Healthcare Director -
Lloyds Banking Group

Jon leads on Healthcare for Lloyds Bank across the South West. A Chartered Banker with 15 years commercial and corporate banking experience, Jon has worked across a range of sectors with special focus in

Healthcare, Not-for-Profit, Legal and Partner based organisations.

“Our dedicated team of Healthcare Relationship Managers have deep sector experience and strong networks across the region. We are committed

to supporting the sector and using our relationships to add value for our clients”



Kirsty Hunt
HR Consultant - Narrow Quay HR

Kirsty previously worked as an employment lawyer for over 10 years before moving into a HR focused role. Kirsty provides a commercial and pragmatic approach to supporting businesses with day to day operational issues and has worked across a range of organisations in both the public and private sector. In particular, Kirsty has

worked with a number of large health organisations.

Support with day to day operational issues including, employee relations, drafting contracts and policy reviews, staff training and helping to implement positive change.

Support with staff management in

relation to conduct, sickness absence and performance management.

Carry out project work such as grievance and disciplinary investigations, panel support and redundancy consultations.



Nigel Grinstead
 Director and CEO
 Digital First Limited and Open Junction

Nigel is Chief Executive of Victoria Medical Centre and its associated partner Digital First an innovative concept in Primary Care access, the first practice of its kind to be located in a shopping mall.

Nigel has over thirty years experience in the sector and also supports digital

transformation and turnaround for other practices via a vibrant consultancy organisation, Open Junction. Nigel was a founding CEO of Pier Health, Weston-super-Mare and assisted in developing Europe's largest Super partnership in Birmingham. Nigel is a non-executive director

of a number of leading healthcare providers.



Peter Maynard
 Regional Representative at IGPM and Managing Partner - Horfield Health

Peter Maynard is Executive Partner and Practice Manager at Horfield Health Centre in Bristol. HHC is a practice serving a patient cohort of significant deprivation in north Bristol.

Peter worked as a lawyer for over 30 years, specialising in litigation, especially personal injury claims. He joined HHC in December 2017 as his first role in healthcare and general practice.

Peter is also the Bristol and North Somerset regional representative

for the Institute of General Practice Management. The IGPM was formed in December 2020 by 4 practice managers who understood the need for a collective voice for practice management staff, which until then had been sorely lacking. Now with over 1000 members in all of the NHS systems in the four UK countries, IGPM has made its voice heard on all of the key issues, having formed relationships with all the relevant national bodies.

It has also recently launched an accreditation framework for all

practice management staff. This was created with the help of Professor James Kingsland OBE, and provides independent peer reviewed accreditation, finally giving professional status to this cornerstone of the general practice community. The domains used for the accreditation process can also be used as a framework for career progression for managers new in post and those looking to develop their career in practice management."



Dr Richard More CEO - Xytal

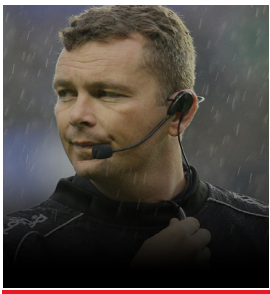
Richard was appointed a GP principle in 1991. He has had a lifelong interest in what makes individuals and organisations effective, or otherwise. An MBA in 2005 consolidated learning. In 2006 he founded, and is currently CEO, Xytal Health Management which has supported over 1000 healthcare organisations to:

- Work productively
- Reduce Stress
- Work across organisational boundaries at scale

From 2007 to 2013 he was a director at Avanaula that delivered award winning innovative Community COPD services. In 2016 he moved on from

Hendford Lodge Medical Practice where he had been Managing Partner to Ryalls Park as Partnership Chairman. He stopped clinical practice in 2021.

He also is company chairman at Xytek, a software development company and Fingo, a digital marketing agency.



Sean Holley TV Rugby Analyst for BBC Wales and Event

Sean Holley is a TV Rugby Analyst for BBC Wales Scrum V in studio and outside broadcasts. Sean provides commentary and match analysis In-game and pre/post match. He also works for BT Sport, Sky Sports, S4C and hosts the Sony Award winning 'Rugby Nation' weekly show on Nation Radio. Sean writes technical coaching articles for several publications and has a regular monthly column in the World's largest selling rugby publication, Rugby World.

Sean was Head Coach for Ospreys Rugby where he spent nine Seasons – over 250 games. He has worked with British Lions, Grand Slam winners, All Blacks and Springboks including the likes of Shane Williams, Gavin Henson, Adam Jones, Ryan Jones, Tommy Bowe, Justin Marshall, Jerry Collins, Scott Gibbs, Mike Phillips and many more. He has also worked as a Coach for the Welsh Rugby Union at all levels including the National Team in 2005 and 2009. Sean has

also held several other high profile positions in the World of Rugby. He was the longest serving and most successful Welsh Regional Coach helping the Ospreys to win 5 titles and 3 Heineken Cup Quarter Final places. In 2013 Sean was appointed Head Coach for Bristol Rugby where in his first season Bristol finished top of the English Championship scoring a record number of tries and points. He left in 2016 have helped Bristol gain promotion to the Aviva Premiership.





Tim Scruton

Managing Director - Osmond Tricks

Tim and the team adopt a personal approach to business and seek to develop long term relationships with clients, through trust, professionalism and service. He is still in touch with

his first healthcare client from 1998, having completed more than 50 commercial projects in the intervening period, the majority in the healthcare sector. Tim was an original director

of Osmond Tricks before becoming a Partner, Director and finally Senior Director at GVA Grimley Limited.

